

Meeting:	Cabinet
Date:	15 th December 2005
Subject:	Primary Care Trust (PCT) Joint-Working – Member Representation within new Governance arrangements
Responsible Officer:	Lorraine O'Reilly, Executive Director (People First)
Contact Officer:	Penny Furness-Smith, Director of Community Care Paul Clark, Director of Children's Services
Portfolio Holder	Portfolio Holder for Social Care and Health
Key Decision:	No
Status:	Part 1

Section 1: Summary

Decisions Required

1. That Cabinet appoint two elected Members to serve as the Council's representation on the new Health and Social Care Integration Board and on its related bodies - the Adult Health and Social Care Partnership, and the Children and Young People's Partnership.
2. That Cabinet agree that one of these representatives should be the Portfolio-Holder for Social Care and Health.
3. That Cabinet agree that the Member representation on these bodies should be reviewed on an annual basis at the first Cabinet meeting falling after the Annual Council meeting.

Reason for report

Cabinet, PCT Board, and the Harrow Strategic Partnership (HSP) Board all agreed the new governance arrangements for integrated working with the Council's NHS partners earlier this year. The membership of these bodies now needs to be established as soon as possible. A decision in relation to Member representation is required before a first meeting of the Integration Board can be convened.

Benefits

An early establishment of the new Health and Social Care Integration Board, and of its related partnership groups - the Adult Health and Social Care Partnership and the Children and Young People's Strategic Partnership – will provide a basis for Members to be directly involved in determining the direction and pace at which further joint-working proceeds. It will provide a formal opportunity to raise and discuss issues of mutual concern.

Cost of Proposals

There are no specific or additional costs associated with this decision.

Risks

There are no specific risks associated with this decision.

Implications if recommendations rejected

The Governance arrangements already agreed cannot be established until Member representation from the Council is agreed.

Section 2: Report

Brief History

On 23rd June 2005, the Cabinet agreed a series of recommendations regarding progression of the broad integration agenda with the Harrow PCT with regard to social care and community health care services, and also services for children and young people. The PCT Board also considered and agreed the same set of proposals at its June meeting.

Subsequently, at their meeting on 4th August 2005, the Harrow Strategic Partnership Board agreed to the implementation of these proposals regarding the new Governance arrangements, which now form part of the HSP structure. The HSP Board made a minor modification to the structure of these working groups, which are now as shown on the charts attached to this report as Appendix 1.

There has been a delay in taking these decisions forward since then, largely due to uncertainty about the local impact of Government proposals on the future role and structure of PCTs generally. This has now been resolved in part, with

announcements from the Department of Health that London will be best served by PCTs that share a co-terminous boundary with their respective local authority.

In view of this, it is now appropriate to seek to put in place the Governance arrangements as defined within the Cabinet report considered in June. Members are, therefore, now asked to consider how they wish to be represented within these new arrangements, so that these bodies can be convened and begin their work.

Members are recommended to consider convening a meeting of the Health and Social Care Integration Board as soon as possible as this would provide (amongst other things) an appropriate forum in which Members can give further consideration, with their PCT counter-parts, as to how the local implications of the current structural changes likely to affect the PCT might best be managed.

Options considered

Members will recall that the proposals agreed earlier in the Summer (and which are incorporated within the draft Section 31 Agreement also agreed at the same June meeting), provide for 2 elected Members of the Council and 2 Non-Executive Directors of the PCT to be included in the membership of the Health and Social Care Integration Board.

They also provide for the same level of representation to be included within the Adult Health and Social Care Partnership and the Children and Young People's Strategic Partnership, which will undertake the detailed joint-planning work with regard to adult health and social care services, and children's services respectively. Thus a total of 6 functions are available, to be filled by 2 or more elected Members.

There would appear to be two main issues. In relation to each of these, options exist for how this representation might be arranged.

Issue 1 – for the same 2 Members to serve on each of the 3 groups; or for there to be different representation on each of the groups.

Members may wish to consider whether the need for strategic coherence across the work of these 3 groups suggests there should be continuity of membership.

Issue 2 – whether there should be political balance within the representation on these groups.

It is also suggested that Members may wish to ensure that these nominations are included amongst those reviewed on an annual basis at the first Cabinet meeting falling after the Annual Council meeting.

Members may also wish to know that the Harrow PCT have now agreed that their own representatives will be Geoff Rose (PCT Chair), and Gillian Schillier (Non-Executive Director on the PCT Board).

Consultation

No consultation has been undertaken specifically in relation to this decision.

Financial Implications

There are no financial implications arising from this report.

Legal Implications

None known.

Equalities Impact

None.

Section 17 Crime and Disorder Act 1998 Considerations

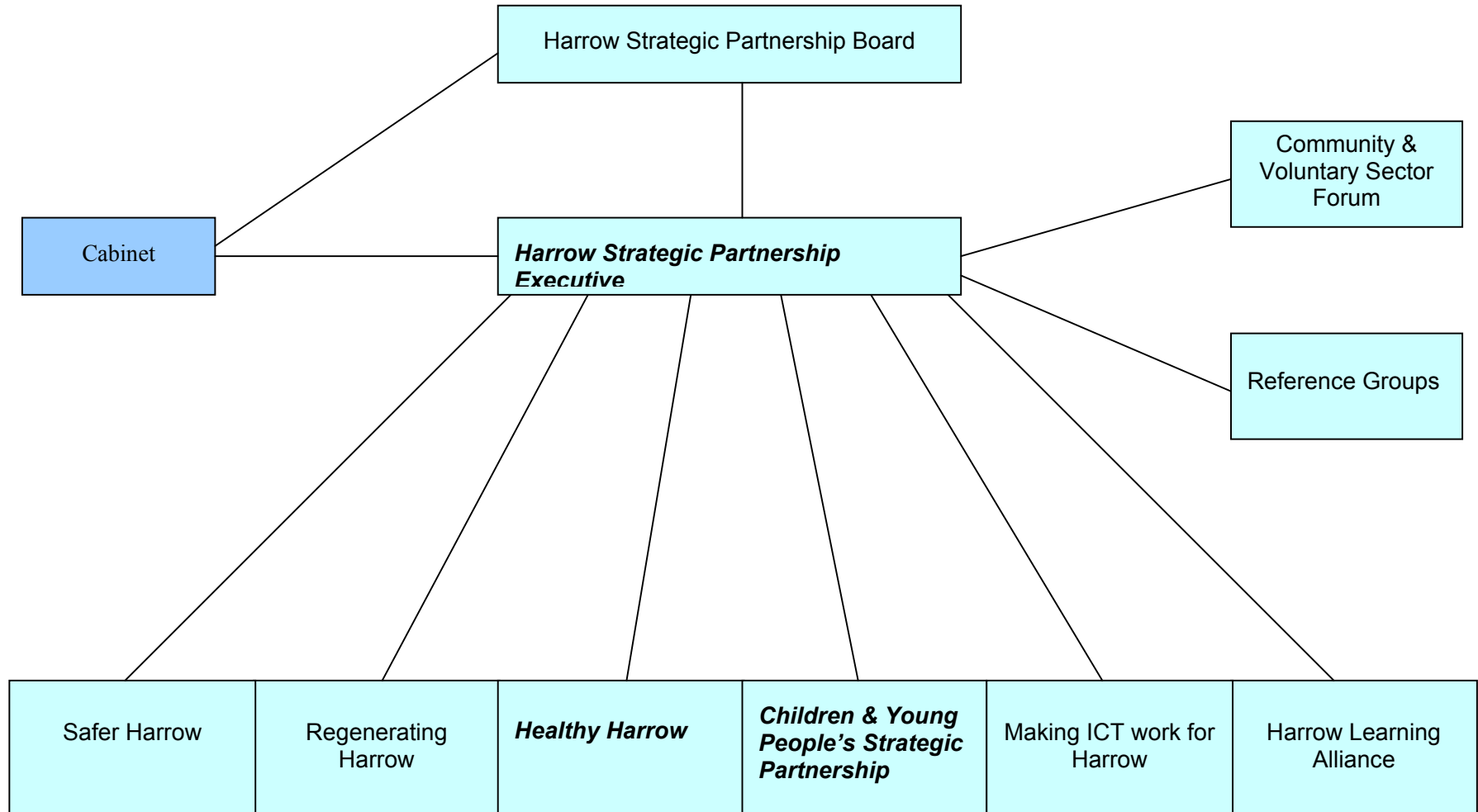
None.

Section 3: Supporting Information/ Background Documents

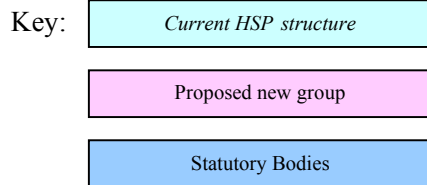
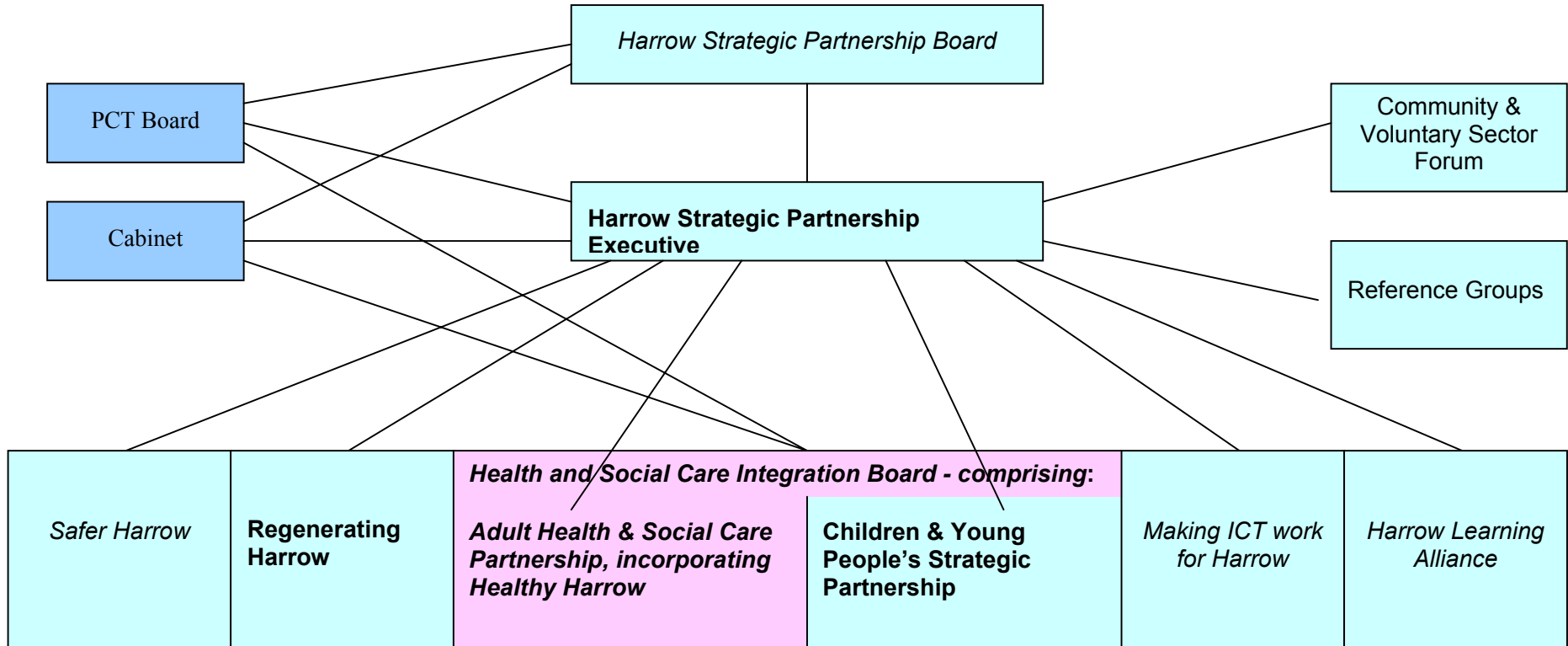
Appendix 1: Structure Charts, showing how the new Governance arrangements fit within the HSP structure, as amended at the August meeting of the HSP Board.

Integration Governance Structure: HSP Structure Charts – as revised following HSP Board discussions

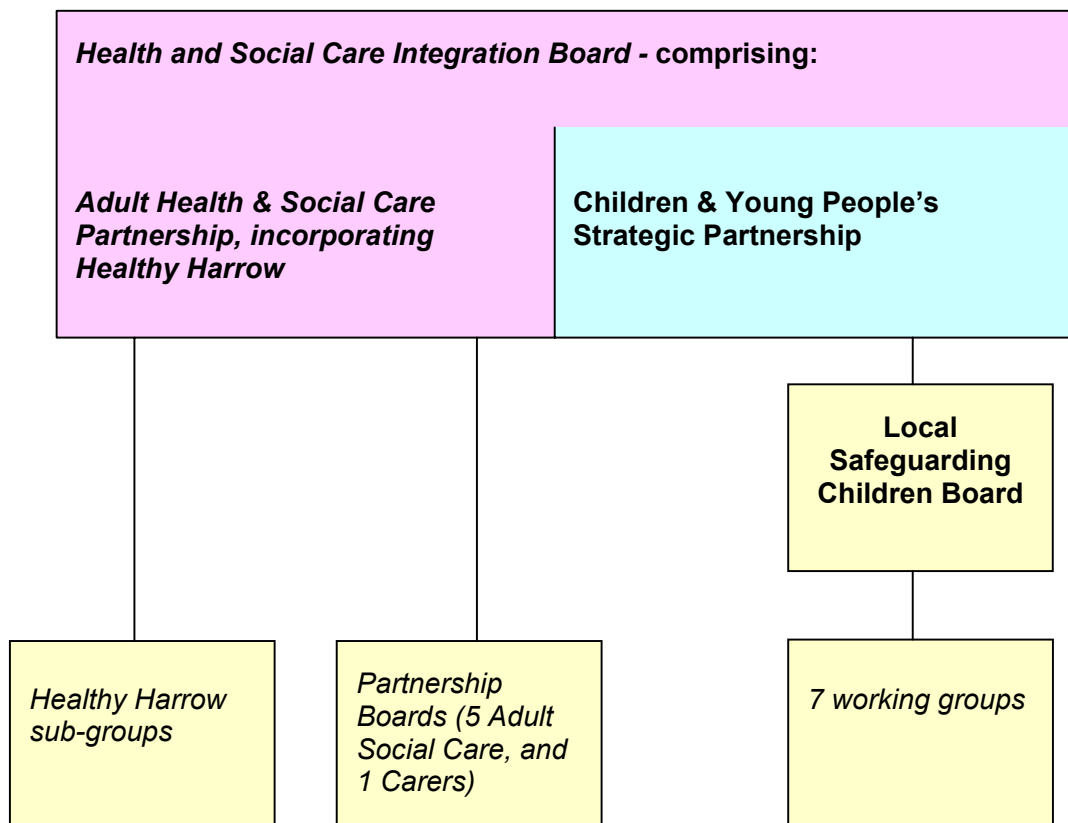
Previous Harrow Strategic Partnership structure



Proposed Governance arrangements (showing fit within the revised HSP structure)



Proposed Governance arrangements (detail, showing links to Delivery Groups)



Key:

Current HSP structure

Proposed new group

Delivery Groups